

# Colour Chart Talens Art Creation Acrylic



**Titanium white**  
105 +++ ■ □  
PW6



**Titanium buff deep**  
290 +++ ■ □  
PW6/PY42/PBk7



**Naples yellow deep**  
223 +++ ■ □  
PY42/PW6



**Naples yellow red light**  
292 +++ ■ □  
PW6/PY42/PR101



**Naples yellow red**  
224 ++ ■ □  
PY74/PO34/PW6



**Pastel yellow**  
226 +++ ■ □  
PW6/PY74



**Azo yellow lemon**  
267 ++ ■ □  
PY3



**Primary yellow**  
275 ++ ■ □  
PY3/PY74



**Azo yellow medium**  
269 ++ ■ □  
PY74/PO34/PW6



**Azo yellow deep**  
270 ++ ■ □  
PY74/PO34



**Azo orange**  
276 ++ ■ □  
PO34/PY74



**Naphthol red light**  
398 ++ ■ □  
PR112/PY74



**Naphthol red medium**  
396 ++ ■ □  
PR112/PR23



**Carmine**  
318 ++ ■ □  
PR23



**Blossom**  
382 +++ ■ □  
PW6/PR112



**Pastel rose**  
390 +++ ■ □  
PW6/PV19



**Light rose**  
361 +++ ■ □  
PW6/PV19



**Rose**  
357 +++ ■ □  
PW6/PV19



**Quinacridone rose**  
366 +++ ■ □  
PW6/PV19



**Primary magenta**  
369 +++ □ □  
PV19



**Permanent red violet light**  
577 +++ ■ □  
PV19/PW6



**Permanent red violet**  
567 +++ ■ □  
PV19/PV23



**Pastel lilac**  
584 +++ ■ □  
PW6/PV23



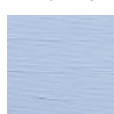
**Pastel violet**  
579 +++ ■ □  
PW6/PV23/PV19



**Ultramarine violet light**  
519 +++ ■ □  
PB29/PW6/PV19



**Permanent blue violet**  
568 +++ ■ □  
PV23



**Pastel blue**  
580 +++ ■ □  
PW6/PB29



**King's blue**  
517 +++ ■ □  
PB29/PW6



**Cobalt blue (ultramarine)**  
512 +++ ■ □  
PB29



**Ultramarine**  
504 +++ □ □  
PB29



**Primary cyan**  
572 +++ ■ □  
PB15/PW6



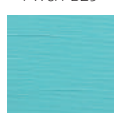
**Phthalo blue**  
570 +++ □ □  
PB15



**Greyish blue**  
562 +++ ■ □  
PB29/PBk7/PW6



**Brilliant blue**  
564 +++ ■ □  
PB15/PG7/PW6



**Antique blue**  
563 +++ ■ □  
PW6/PB15/PBk7



**Sky blue light**  
551 +++ ■ □  
PW6/PB15/PG7



**Mint green**  
678 +++ ■ □  
PW6/PG7/PB15



**Phthalo green light**  
673 +++ ■ □  
PW6/PG7



**Turquoise green**  
661 +++ ■ □  
PW6/PG7/PB15



**Greenish yellow**  
243 ++ ■ □  
PY3/PG7



**Yellowish green**  
617 +++ ■ □  
PG7/PY74



**Permanent green light**  
618 +++ ■ □  
PG7/PY74



**Emerald green**  
615 +++ ■ □  
PG7/PY74/PW6



**Permanent green deep**  
619 +++ ■ □  
PG7/PY74



**Viridian**  
616 +++ □ □  
PG7



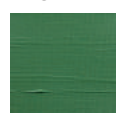
**Sap green**  
623 +++ ■ □  
PG7/PY42



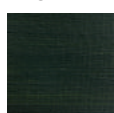
**Pastel green**  
666 +++ ■ □  
PW6/PG7/PY42/PY74



**French green**  
648 +++ ■ □  
PW6/PG7/PY42/PBk7



**Leaf green**  
652 +++ ■ □  
PY42/PG7



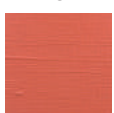
**Olive green**  
620 ++ ■ □  
PBk7/PY3



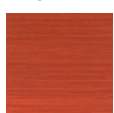
**Yellow ochre**  
227 +++ ■ □  
PY42



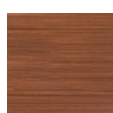
**Raw sienna**  
234 +++ ■ □  
PY42/PR101/PBk11



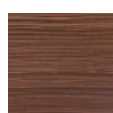
**Red earth**  
436 +++ ■ □  
PY42/PR101



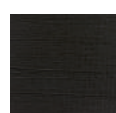
**Burnt sienna**  
411 +++ ■ □  
PR101/PY42/PBk11



**Burnt umber**  
409 +++ ■ □  
PR101/PBk11/PY42



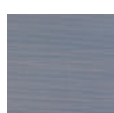
**Vandyke brown**  
403 +++ ■ □  
PR101/PBk11/PY42



**Greenish umber**  
410 +++ ■ □  
PBk11/PY42



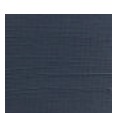
**Warm grey**  
718 +++ ■ □  
PBk11/PY42/PR101



**Neutral grey**  
710 +++ ■ □  
PW6/PBk7/PY42



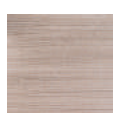
**Sea grey**  
730 +++ ■ □  
PW6/PBk11/PV23/  
PB15



**Payne's grey**  
708 +++ ■ □  
PW6/PBk11/PV15/  
PB15



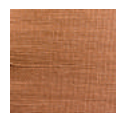
**Ivory black**  
701 +++ ■ □  
PBk7



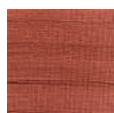
**Silver**  
800 +++ ■ □  
Coated Mica/PBk11



**Gold**  
801 +++ ■ □  
Coated Mica



**Bronze**  
811 +++ ■ □  
Coated Mica



**Copper**  
805 +++ ■ □  
Coated Mica



**Metallic rose**  
833 +++ ■ □  
Coated Mica/PR112/  
PBk7



**Metallic violet**  
835 +++ ■ □  
Coated Mica/PV23/  
PBk7



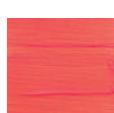
**Metallic blue**  
834 +++ ■ □  
Coated Mica/PB15/  
PBk7



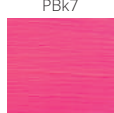
**Metallic green**  
836 +++ ■ □  
Coated Mica/PB15/  
PY74/PBk7



**Reflex yellow**  
256 ° □



**Reflex orange**  
257 ° □



**Reflex rose**  
384 ° □



**Reflex green**  
672 ° □

## Degree of lightfastness\*

- +++ = at least 100 years lightfast
- ++ = 25 - 100 years lightfast
- + = 10 - 25 years lightfast
- ° = 0 - 10 years lightfast

\*Under museum conditions.

The lightfastness has been tested in accordance with ASTM Standards D4303.

## Transparency/opacity

- = opaque
- ▣ = semi-opaque
- ◻ = Semi-transparent
- = transparent

All colours are available in 75 ml and 200 ml tubes.  
□ = also available in 750 ml jars.

PG7 = pigment(s) used