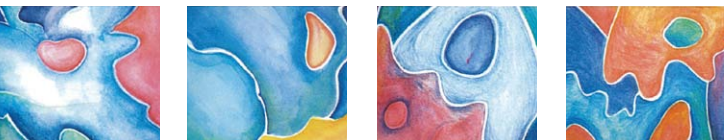
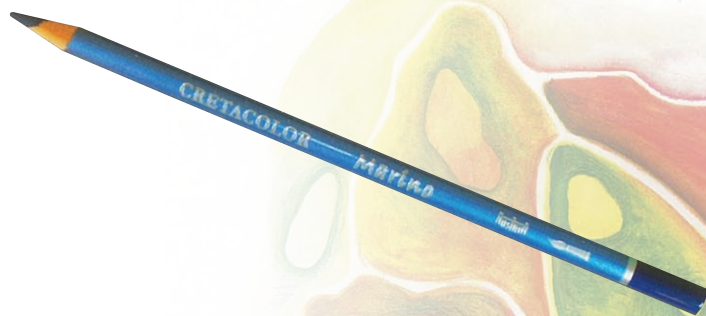


Brevillier's CRETACOLOR®

Marino Aquarelle Pencils

These Fine Art quality, water-soluble pencil represents the next generation of colours produced in accordance with latest ASTM-D4303 specifically devised for the measurement and labelling for lightfastness (LF) scale from 1-5 (1 being the highest) which tests the exposure of colours to the equivalent of 100 years of museum lighting. All 36 Marino colours were rated at LF1 or LF2 for maximum lightfastness. Marino Aquarelle pencils will captivate the user with their brilliant colours, soft stroke and non-fading colours. All colours can be inter-mixed to produce numerous intermediate tones. The cedar 7.35mm barrell pencils are finished with a soft metallic blue lacquer and end dipped to indicate the colour of the 3.8mm colour strip. Available in tinned sets of 12, 24 and 36 colours and all 36 colours are available individually.

	101 Perm. White		162 Indigo
	103 Yellow Citron		163 Bremen Blue
	105 Naples Yellow		177 Emerald Green
	107 Cadmium Citron		181 Moss Green Light
	108 Chromium Yellow		182 Moss Green Dark
	109 Perm. Dark Yellow		184 Grass Green
	111 Orange		191 Olive Green Dark
	113 Perm Red Light		201 Ivory
	115 Perm Red Dark		202 Ochre Light
	116 Carmine Extra Fine		209 English Red
	117 Madder Carmine		215 Chesnut Brown
	128 Magenta		216 Carmine Extra Fine
	131 Tan Light		221 Umber
	134 Cyclamen		232 Light Grey
	138 Violet		235 Dark Grey
	151 Glacier Blue		250 Ivory Black
	155 Ultramarine		260 Graphite Aquarelle
	158 Light Blue		
	161 Prussian Blue		



CR24+ (colour number)

This chart is produced within the limitations of printing and is intended as a guide only.